

ILLUMINATED GLOBE

WARNING

- The illuminated globe is not a toy. Children should use it only under adult supervision.
- The illuminated globe is an electrical appliance if placed on raised surfaces, make sure it is stable to avoid slipping or falling.
- A damaged cable should only be replaced by the manufacturer or a qualified electrician.
- If after unpacking and connecting, the light does not work, make sure the bulb is screwed in tightly.
- Never remove the plug from the socket by pulling on the cord.
- Do not hang or drape anything on the globe.
- Keep these instructions for future reference.

CAUTION, IMPORTANT SAFETY INSTRUCTIONS

This portable lamp has a polarized plug (one blade is wider than the other) as a feature to reduce the risk of electric shock. This plug will fit in a polarized outlet only one way. If the plug does not fit fully in the outlet, reverse the plug. If it still does not fit, contact a qualified electrician. Never use with an extension cord unless plug can be fully inserted. Do not alter the plug.

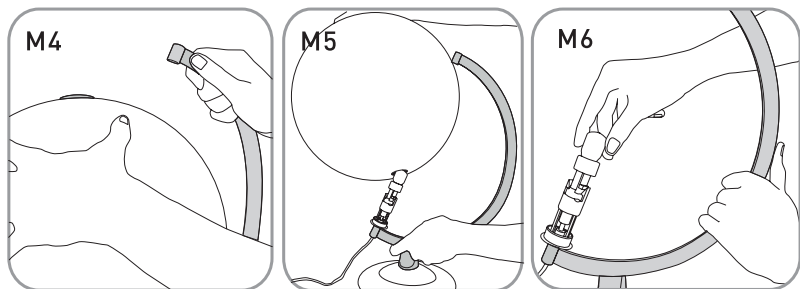
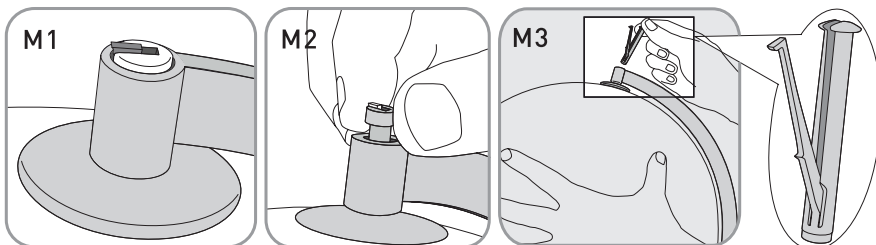
INSTRUCTIONS FOR CHANGING THE BULB

CAUTION!

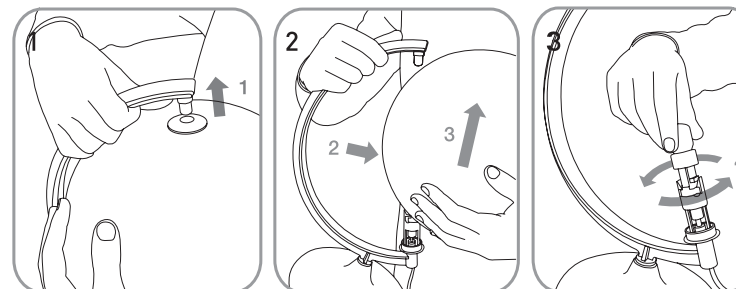
Always use the correct bulb size: Type E12 max 25 W, 120V ~ 60 Hz.

Disconnect the globe from the electric supply and wait a few minutes for the bulb to cool down.

- If the globe has a metal Meridian:
Remove the plastic pin according to figures M1 to M3 (possibly with the aid of a small screwdriver). Remove the sphere, as can be seen in the figures M4 and M5.
Caution: Be careful not to scratch the meridian on the globe.

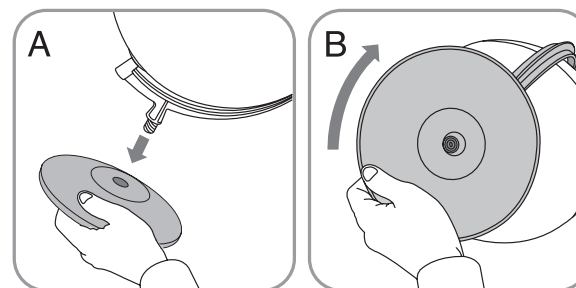


- If the globe has a plastic Meridian:
Carefully pull up the meridian arc until the axle comes out of the globe. (See picture 1). Hold the meridian arc up and push the globe forward. (See picture 2, arrow direction 2). Now lift out the globe from the lamp base (see picture 2, arrow direction 3). Be careful not to scratch the globe with the meridian.



INSTRUCTIONS FOR ASSEMBLING THE GLOBE

Screw in the lower part of the arc to the base (see picture A) by turning the base. (See picture B).



CARE OF YOUR ILLUMINATED GLOBE

We ask that you pay attention to the following instructions for use:

- Please avoid the exposure of globe in bright sunshine.
- Keep the globe in dry rooms and far from radiators or other sources of heat.
- Clean the surfaces by using a damp cloth. Use water only, never use alcohol or other cleaning solvents which would permanently damage the surfaces.



Waypoint Geographic LLC

PO Box 953874

Lake Mary, FL 32795

email: support@waypointgeographic.com

website: www.waypointgeographic.com

Phone: 855-445-6237